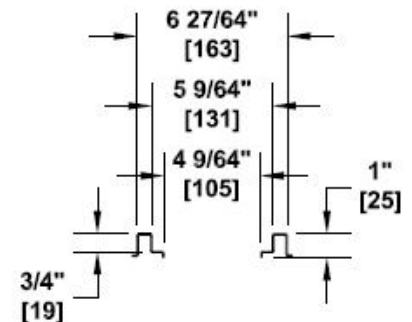
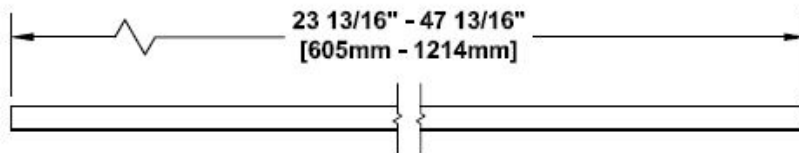
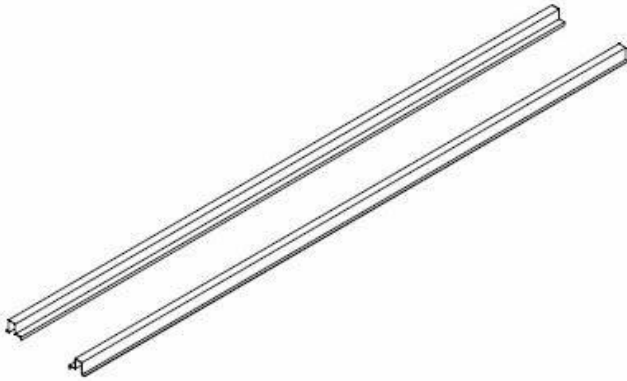


1-877-903-7246



www.trenchdrainsupply.com

Number	Series
DA0620A	TPC600 POLYGUARD Galvanized Rails Polycast 600 Series



<input checked="" type="checkbox"/> Rail Type	Part No.
<input type="checkbox"/> Galvanized Steel POLYGUARD (48\" Long)	DA0620A
<input type="checkbox"/> Galvanized Steel POLYGUARD (24\" Long)	DA0620AH

Manufacturer

POLYCAST®

Specification

POLYCAST POLYGUARD PROTECTS THE EXPOSED UPPER EDGE OF THE POLYCAST CHANNELS FOR UNMATCHED STRENGTH AND PROTECTION AGAINST CHIPPING AND SCARRING IN FREQUENT OR HEAVY TRAFFIC. POLYGUARD ALSO GIVES EXTRA ARCHITECTURAL VERSATILITY. POLYGUARD'S KEYING FEATURE LOCKS INTO THE ADJACENT CONCRETE TO HELP DISPENSE DESTRUCTIVE LATERAL LOADS AWAY.

DISCLAIMER - The customer and the customer's architects, engineers, consultants, and other professionals are completely responsible for the selection installation and maintenance of any product purchased from Trench Drain Supply and/or its manufacturers. TRENCH DRAIN SUPPLY MAKES NO WARRANTY, EXPRESS OR IMPLIED, AS TO THE SUITABILITY, DESIGN, MERCHANTABILITY, OR FITNESS OF THE PRODUCT FOR CUSTOMERS APPLICATION. The drawing and information provided remain the property and copyright of the manufacturer listed. The manufacturer reserves the right to modify specification without notice.